

# KIRTON PRIMARY SCHOOL

## TERM 6 NEWSLETTER 2025



### YEAR 5

June 2025

Dear Parents and Carers

The year seems to have flown by and we find ourselves in Term 6! Another huge welcome back to all the children. Term 6 has plenty of things to keep the children focused, having fun and learning. It's going to be great!

#### Our Topic

Term 6: Great Journeys

The history of space exploration, moon phases, the Solar System and many other space-related subjects will be covered in our topic lessons. Much of the learning undertaken will be used by the children in their writing lessons. During the term, we have a 'Space Scientist' visiting! They are bringing the 'Space Dome' where children can learn lots about the stars, planets and space that surrounds our planet Earth. It is always a fabulous day and one that creates awesome memories. Could you help make a mobile of the Solar System using everyday items from packaging? Your child will need to think about the relative sizes of the planets and the order they are in. They could bring it into school to show in an assembly.

As well as learning about venturing into space, Year 5 will learn about fabulous, ground-breaking voyages that have occurred here on Earth!

#### Maths and English

In maths lessons, children will be learning how to read data from graphs, translate shapes into quadrants and identify symmetry, as well as reinforcing their use of formal methods of calculations used in context.

It would really support your child if they were confident with their times tables. This would help them in all areas of maths. This term your child needs to learn up to the 12 times table and the associated division facts. We are also encouraging children to learn percentage, decimal and fractions facts so they can recall them rapidly when needed.

In English, we will be learning how to use semi colons, a wider range of vocabulary and refreshing our knowledge on speech punctuation. This knowledge will then be used to write reports, persuasive arguments and balanced arguments.

Please continue to support your child by encouraging them to read more and question them on the books they are reading. You could also ask them to show you various features that they have been learning about in their Grammar and Punctuation lessons that they have found in their reading books.

The spellings your child will be learning this term may be accessed through our school website; it would be really useful if you could help your child to learn these spellings.

#### PE

Our PE days remain on a Monday and Wednesday. Please ensure that your child has the appropriate PE kit in school every day. For outdoor games, the children need plain black/navy tracksuit bottoms, a plain white t-shirt, a plain sweatshirt and trainers. For indoor PE, the children need plain black/navy shorts and a plain white t-shirt. Every item needs to be clearly labelled and in a bag that will remain in school every day. Kits will be taken home to be washed at the end of each term. No items should be taken home during the term.

#### Warmer weather

As the weather is getting warmer, children should begin to bring hats into school. Please ensure these are clearly named. Sun cream must not be brought into school as it cannot be applied at school. If necessary, sun cream should be applied at home before coming to school. Water bottles would be very useful for keeping the children hydrated throughout the day.

### **Homework**

Homework is set on a Wednesday and will continue to support your child's education. It will include weekly reading and some spelling investigations. If there are ever any problems about the homework please come and see us as soon as possible (parents or children).

### **Important Dates**

02.06.25 – First day of Term 6

26.06.25 – Sports Day

30.06.25-02.07.25 – PGL and Activity Week

14.07.25 – Reports to be sent home this week

15.07.25 – Starlinks Observatory visiting Year 5

18.07.25 – Summer Gala 3:30 – 5:00pm

22.07.25 – Last day of Term 6

02.09.25 – First day of Term 1

Yours Sincerely

**Mr Greaves   Mr Norton**  
**Year 5 Class Teachers**

### **HOW YOU CAN SUPPORT YOUR CHILD'S LEARNING THIS TERM:**

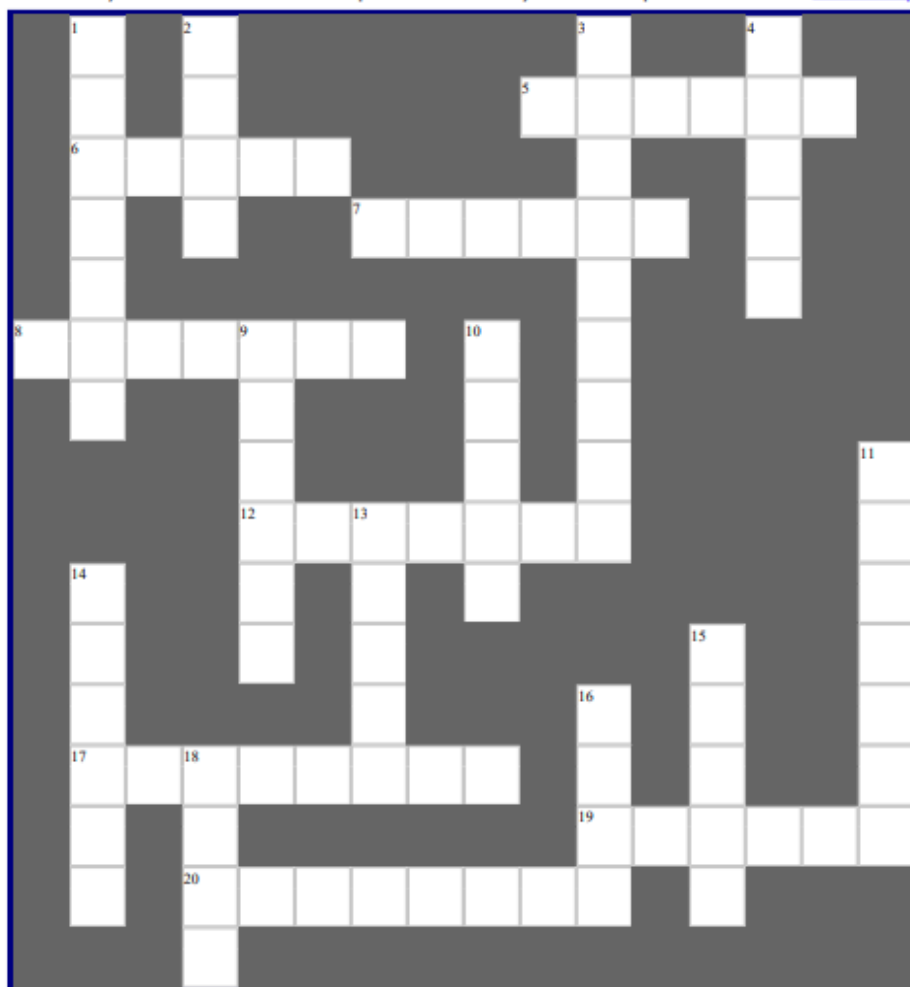
*Key things that parents can do to support their child this term related to things they will be learning about are:*

- If you are out and about in the evening when the stars or moon are visible, question your child on the facts they know. Do they have un-answered questions that you could research together and then they could bring in to school for show and tell?
- Could your child use an 'App' to search the sky for the 3 different constellations? Ask them to draw and label them and bring them in for show and tell.
- Help your child complete the crossword and wordsearch attached to the newsletter.
- Using the nets (attached), could your child make their own satellite or space station?

If you would like to help your child create some art to do with the Solar System that would be fabulous too.

# 7L - The solar system

Created by Dr J E F Frost with EclipseCrossword by Green Eclipse Software — [www.eclipsecrossword.com](http://www.eclipsecrossword.com)



## Across

5. A gassy planet with a spectacular ring system. (6)
6. Appearance of a moon or planet - full, new or crescent for example. (5)
7. This orbits a star and reflects the star's light. (6)
8. Planet nearest the Sun. (7)
12. A blue planet, outermost of the gassy planets in our solar system. (7)
17. A small lump of rock or metal that moves around the Sun, mainly between Mars and Jupiter. (8)
19. Spin on its axis. (6)
20. This means that something gives out light. (8)

## Down

1. Huge gassy planet with a giant red spot. (7)
2. A huge ball of gas that emits light. Our Sun is one. (4)
3. This orbits a planet, our moon is one. (9)
4. The path of a planet around the Sun, or a satellite around a planet. (5)
9. Third largest planet in our solar system, seventh furthest from the Sun. (6)
10. Hot planet with acidic clouds, second closest to the Sun. (5)
11. When the moon casts a shadow on the Earth. (7)
13. Planet usually furthest from the Sun. (5)
14. A group of millions of stars. (6)
15. Our home, the third planet from the Sun. (5)
16. Red planet with canyons, volcanoes and polar ice caps. (4)
18. How much a line departs from the vertical. (4)

Station Road, Kirton, Boston, Lincolnshire PE20 1HY

Tel: 01205 722236

Email: [enquiries@kirton-boston.lincs.sch.uk](mailto:enquiries@kirton-boston.lincs.sch.uk)



## Solar System and Beyond



K	N	P	T	E	E	T	S	A	Z	U	R	T	D	O
N	T	K	P	U	E	Z	N	A	T	S	R	K	V	R
L	S	E	J	T	S	F	A	R	R	T	Q	I	E	E
E	Y	S	R	E	A	A	T	A	T	I	S	T	N	L
M	R	P	C	T	H	P	M	I	L	L	S	T	U	R
E	U	I	T	I	P	L	U	S	B	T	T	O	S	T
R	C	L	H	L	G	U	I	T	A	R	T	L	A	N
E	R	C	T	L	A	T	R	E	U	T	O	N	U	E
T	E	E	R	E	L	O	L	G	Q	R	A	T	S	P
I	M	R	A	T	A	A	S	T	E	R	O	I	D	T
P	I	P	E	A	X	Y	S	A	T	U	R	N	T	U
U	A	Y	E	S	Y	I	E	E	T	A	T	O	R	N
J	S	U	O	N	I	M	U	L	W	R	A	U	Y	E
S	L	E	T	E	N	A	L	P	E	P	S	T	A	L
O	E	E	U	O	U	R	A	N	U	S	S	T	A	E



### WORD LIST

STAR	PLANET	SATELLITE
LUMINOUS	PHASE	ASTEROID
ECLIPSE	ORBIT	ROTATE
TILT	MERCURY	VENUS
EARTH	MARS	JUPITER
SATURN	URANUS	NEPTUNE
PLUTO	GALAXY	

This worksheet was created with "Worksheet Maker" by [Chris Small](#) of [The Small Homeschool Pages](#)  
 Clipart provided by [AwesomeClipartforKids.com](#)  
 Website hosting and design by [UK's No1 Company Ltd](#)

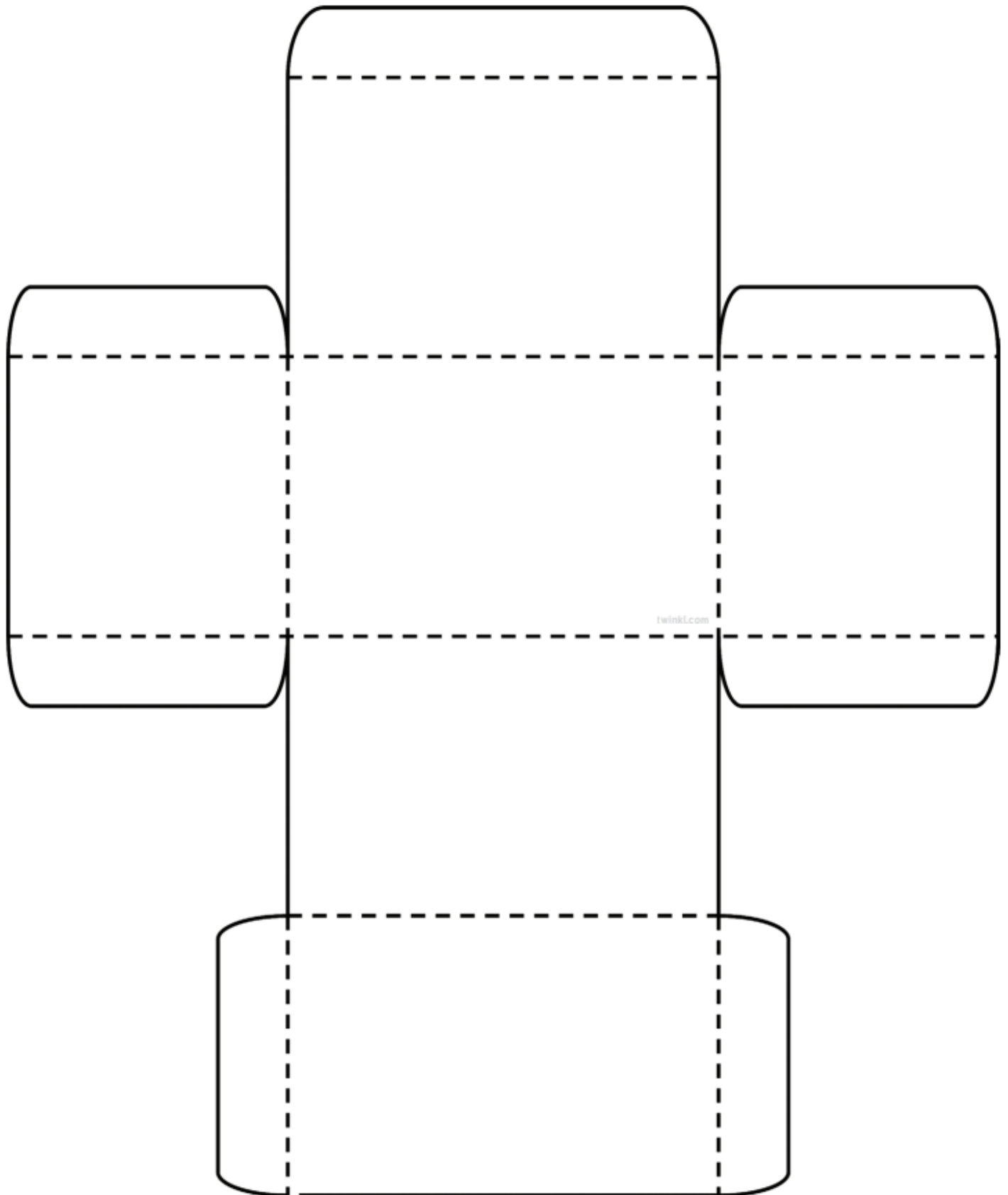
Worksheet ID#B27T304

Station Road, Kirton, Boston, Lincolnshire PE20 1HY

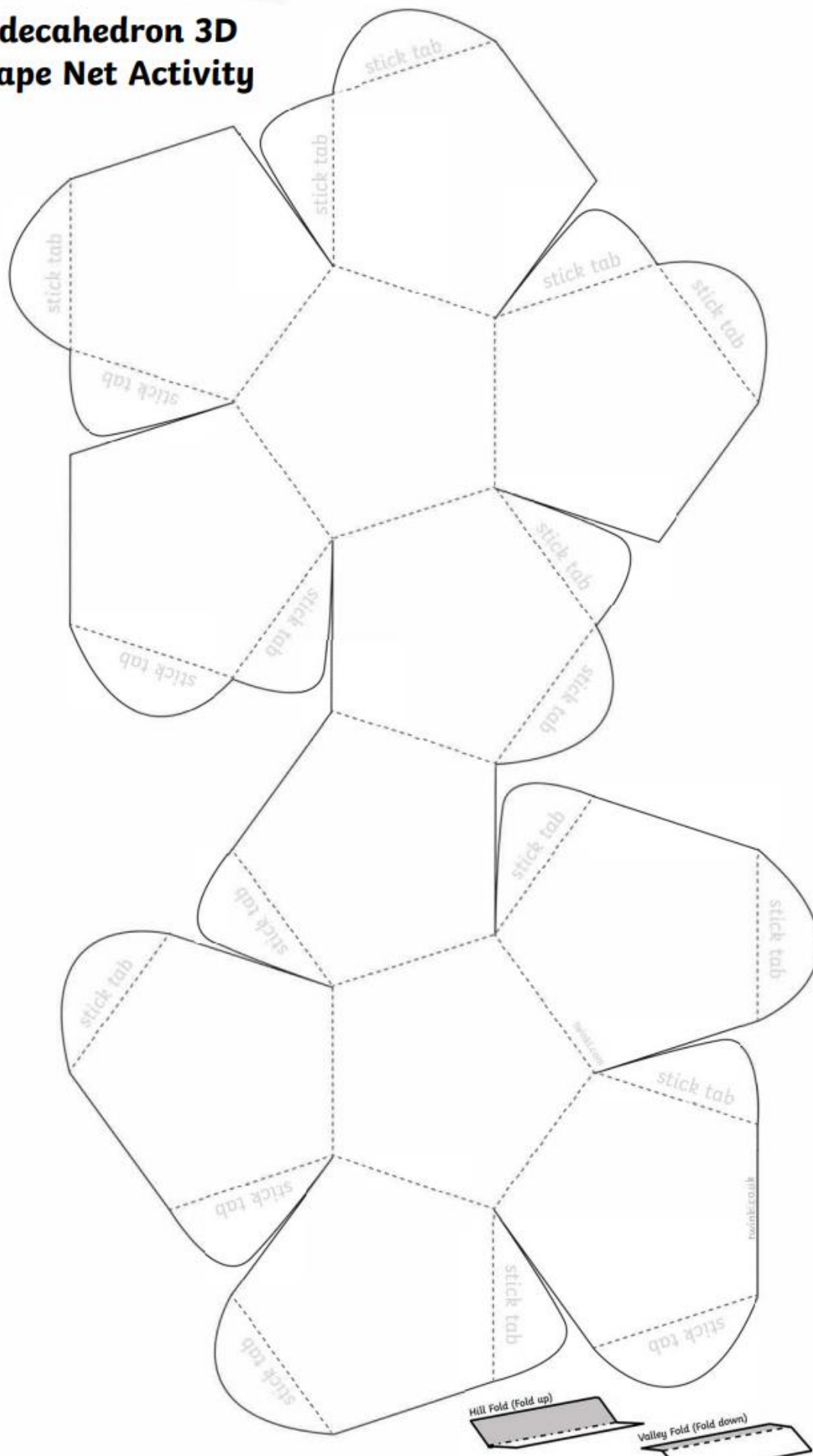
Tel: 01205 722236

Email: [enquiries@kirton-boston.lincs.sch.uk](mailto:enquiries@kirton-boston.lincs.sch.uk)

# Cuboid 3D Shape Net Activity



## Dodecahedron 3D Shape Net Activity



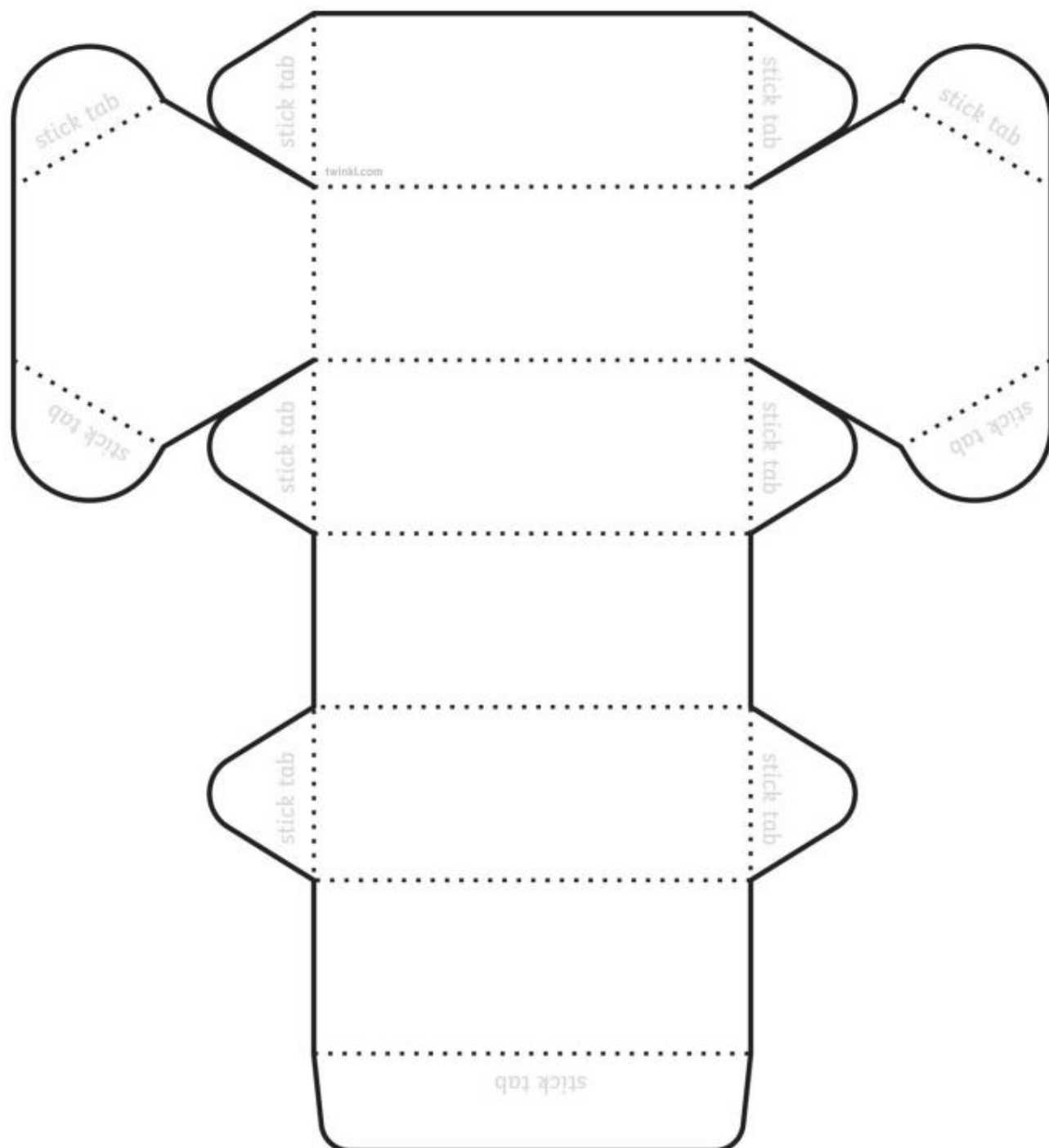


# Hexagonal Prism 3D Shape Net Activity

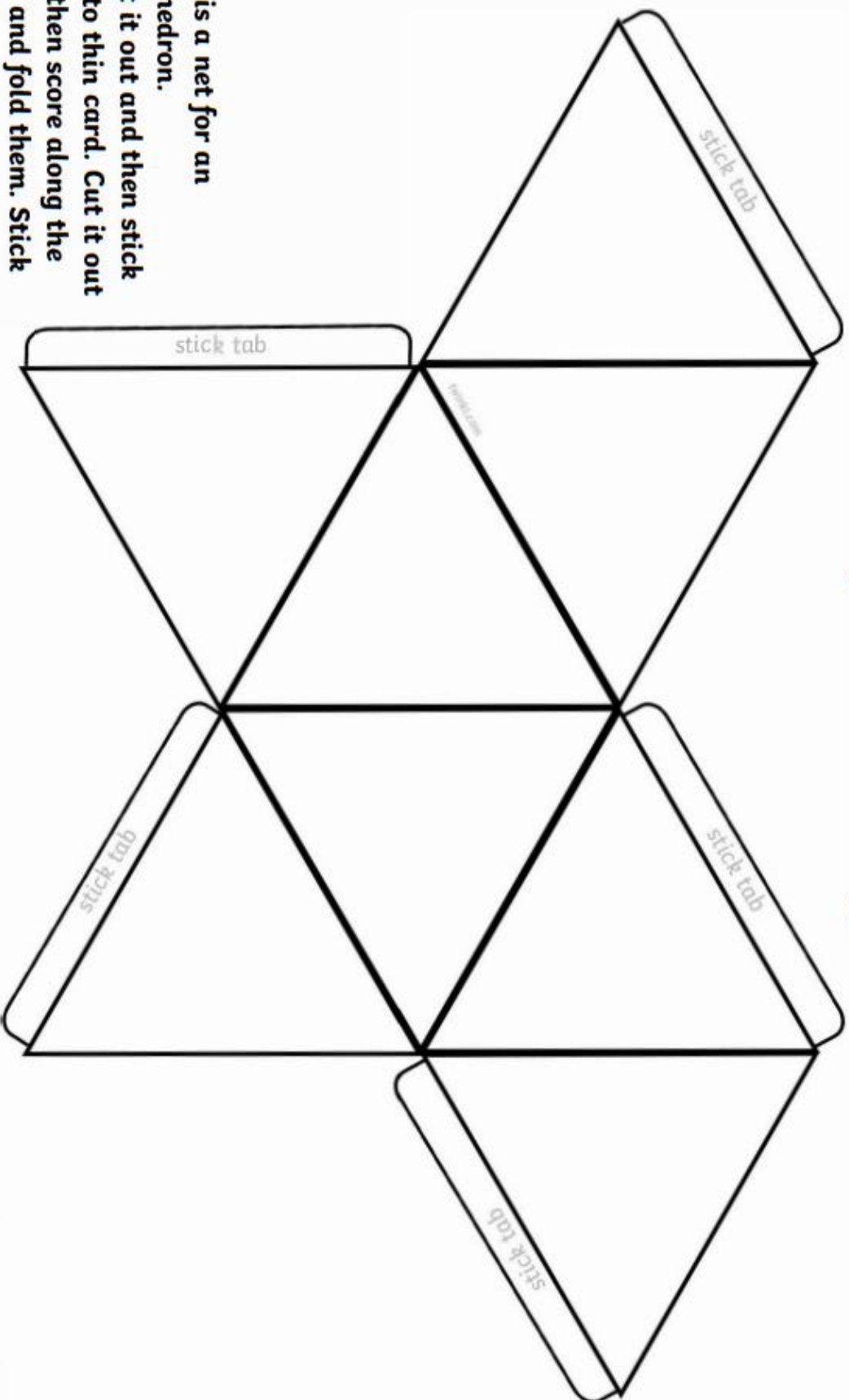
Print the template on card or print on paper (use card for the best results).

Cut the shape out and then score along the dotted lines before folding them.

Stick the shape together with a small amount of glue.



# Octahedron 3D Shape Activity



This is a net for an octahedron. Print it out and then stick it onto thin card. Cut it out and then score along the lines and fold them. Stick together with small amounts of glue.

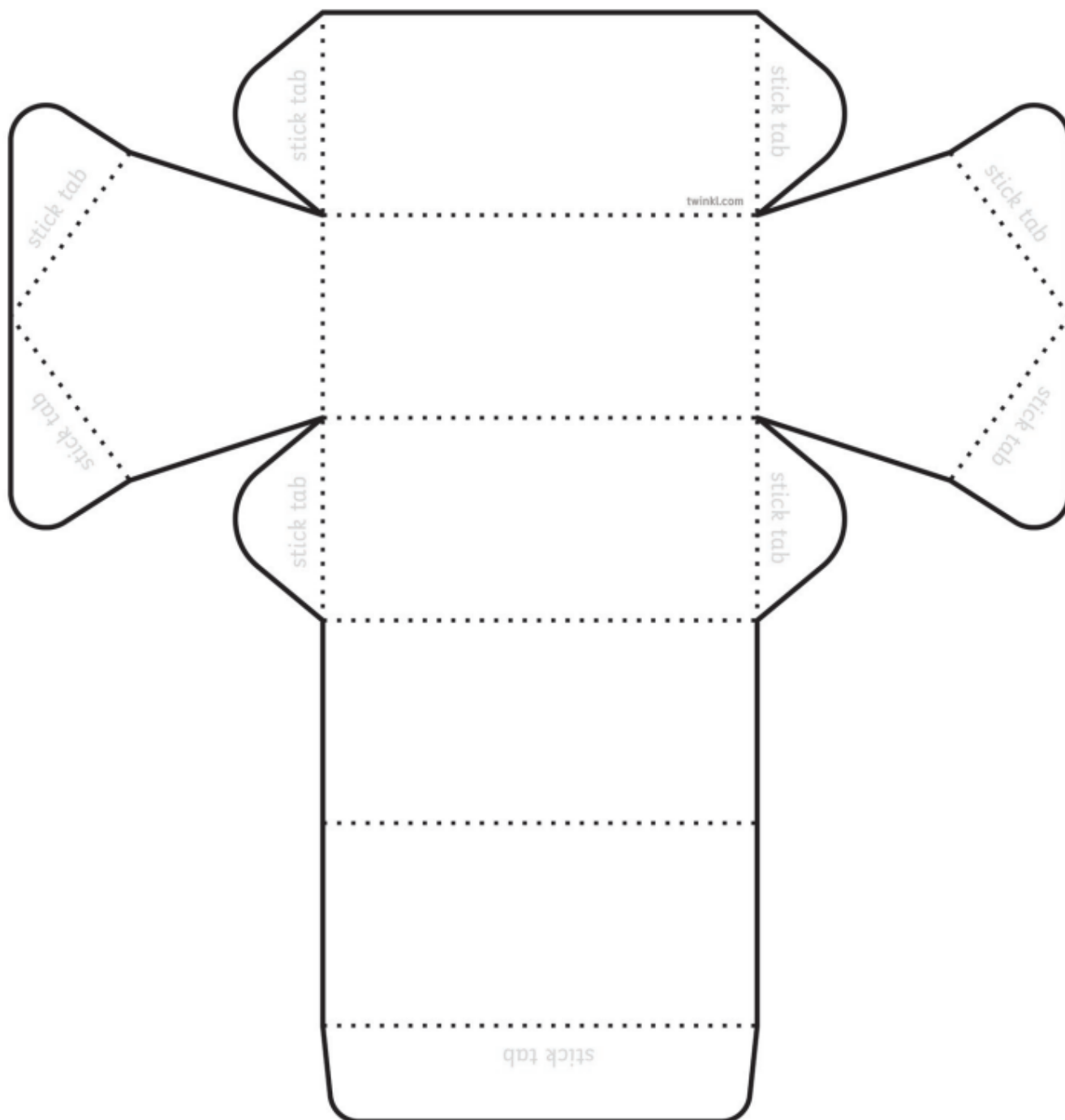


# Pentagonal Prism 3D Shape Net Activity Sheet

Print the template on card or print on paper (use card for the best results).

Cut the shape out and then score along the dotted lines before folding them.

Stick the shape together with a small amount of glue.



## Triangular Prism 3D Shape Net Activity

Print the template on card or print on paper (use card for the best results).

Cut the shape out and then score along the dotted lines before folding them.

Stick the shape together with a small amount of glue.

